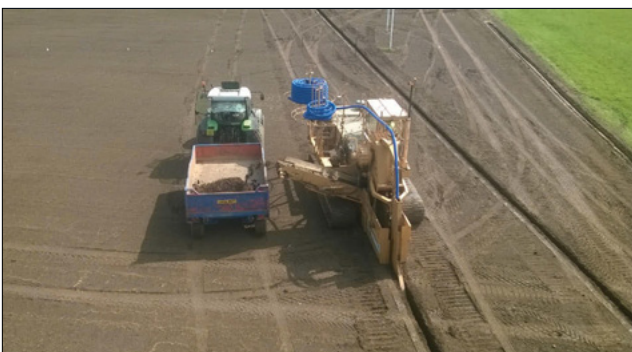




RENOVATING THE FIRST TEAM PITCH

Nuneaton Old Edwardians was founded over a hundred years ago and is a traditional Midlands Rugby Club with a proud history and a 1st XV continually adding to that history. Unfortunately it was also known for a boggy first team pitch which was causing the club a few problems. Located beside a small water course in the bottom of a valley surrounded by housing, the natural conditions did not encourage free movement of water and in the depths of winter the pitches suffered.



After a successful application for funding the club was able to employ a sports field consultant and began the process of renovating the first team pitch. Sportsdrainage / Farm Services were asked to install a new drainage scheme working alongside another local contractor Woodward Turf Care who re-levelled and re-seeded the pitch.

Using our 15/15 Masternbroek sportsfield Trenching machine, we installed a network of 80mm diameter laterals leading to a 100mm diameter main which eventually became a 160mm diameter main to the outlet. The lateral drains were at five metre spacings, with a 2-6mm gravel backfill topped off with Rootzone material to the surface.

Once the work had been completed and re-seeded the grass grew quickly and the pitch turned green ready for use a few months later.

